

ion will be a new overflow weir
ay channel," explained Dave
Principal Engineer at the council.
the collapse of the Victorian
channel which caused the
y," he added. "The threat to the
was not one of overtopping but
se and disintegration of the
spillway channel that allowed
er to escape and scour a hole

other.
If laboratory tests are successful the
design will be put forward for planning
approval early in the New Year.



The scour hole on the downstream slope of the dam

ch on nda

and in the last part of the
participants explored what
might be available if there were
s.

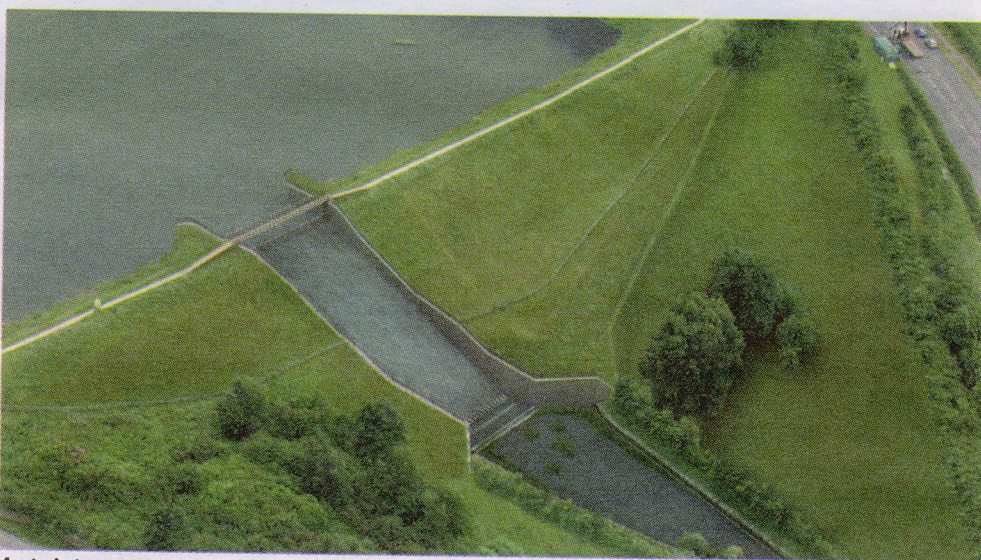
ey said: "By pulling together
rganisations that can help when
household finances are
we can look at what people's
eds are and see if there are
pping up what we can make
help people through a difficult

e have concerns about their
want to make sure that across
the information, advice and
at we can give is as good as

of the event will be published
e next steps which will be
address issues for individuals and
affected by the credit crunch.



BE, Cabinet Member for
Rotherham and John Healey MP,



Artist's impression of the new reinforced concrete overflow weir and spillway

Consultation to start on Bramley traffic management scheme

Local people are being asked for their views on potential changes to a traffic scheme in Bramley.

Two options are being put forward and people can find out more at a forthcoming two-day exhibition. Rotherham Borough Council officers will be on hand to answer questions as well as receive feedback.

The exhibition will be held in the Fletcher Room at Bramley Parish Hall between 10am and 8pm on Thursday and Friday November 27 and 28.

Towards the end of 2007 the current Bramley Traffic Management Scheme was reviewed using feedback from an Ipsos MORI survey which was sent to over 7,000 households in and around Bramley and an independent report on the performance of the scheme. As a result of the review a number of changes to the scheme were approved by the council.

The approved amendments to the existing one-way system (eastbound) on Main Street included additional parking spaces between Howard Road and Church Lane and widening the one-way section of Main Street to make it easier to access the on-street parking spaces by removing the contra flow cycle lane.

However, in June 2008 a clerical error was found in the Traffic Regulation Order (TRO) for the one-way system on Main Street, Bramley. Before the legal process to correct the TRO is undertaken the council has taken the opportunity to investigate potential alternatives to the approved scheme.

As a result the council has

recommended that consultation is undertaken on two potential options for Main Street:

Option One

Retain the one way system on Main Street with approved amendments as outlined above, in other words correct the error in the TRO and readvertise the proposals.

Option Two

Introduce two-way traffic on Main Street but ban traffic from turning left from Cross Street into Main Street. This would require a different set of TROs.

Feedback from the exhibition and consultation will go before Rotherham Borough Council's Cabinet Member for Regeneration and Development Services for determination in the New Year.

Whichever option is chosen, proposed changes to the TRO would be advertised in the local media and an opportunity to comment on the final proposal will be available.

People can either give their views in person at the exhibition when feedback forms will be available or online at www.rotherham.gov.uk/transportation where details of the scheme will also be available.

The closing date for comments is Friday December 5.

For further information please contact the Rotherham Borough Council Transportation Unit on Rotherham (01709) 822904.